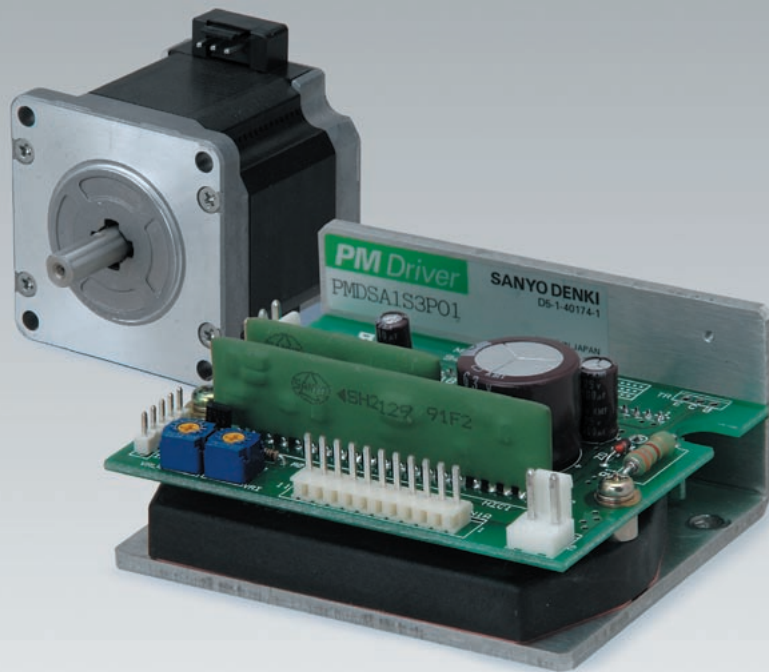


SANMOTION

3-PHASE STEPPING SYSTEMS

F3



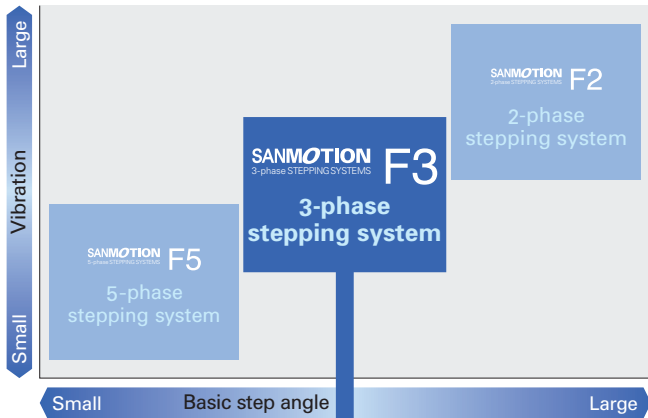
Ver. 1

SANYO DENKI

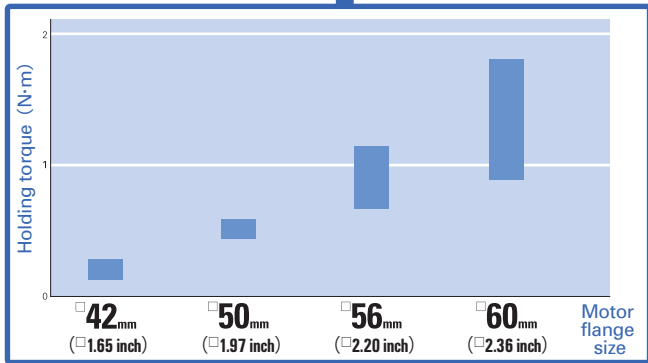
English

Ranges of stepping systems

Set model



Ranges of 3-phase stepping motors



DC input

Standard model P.5

The standard set includes a F series driver and a F series motor.
(Contents of standard model :)
(driver, motor, connector)

Motor flange size

| | | | |
|------------|------------|------------|------------|
| 42 | 50 | 56 | 60 |
| (1.65inch) | (1.97inch) | (2.20inch) | (2.36inch) |

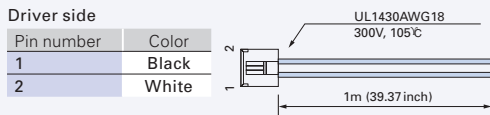
Compliance with international standards

The standard specification SANMOTION F series stepping driver complies with UL and EN safety standards.



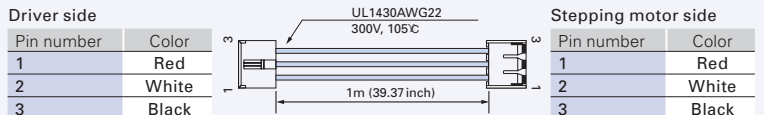
Options

Ⓐ AC power cable



| Model of cable | Length |
|----------------|----------------|
| PM-C02P0100-01 | 1m(39.37 inch) |

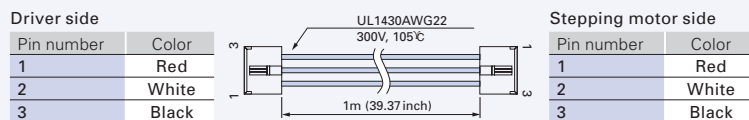
Ⓑ Stepping motor extension cable for 42mm (1.65inch)



| Model of cable | Length |
|----------------|----------------|
| PM-C03M0100-02 | 1m(39.37 inch) |

| Applicable stepping motor | |
|---------------------------|----------------|
| 10H5332-03 □ 0 | 10H5333-03 □ 0 |

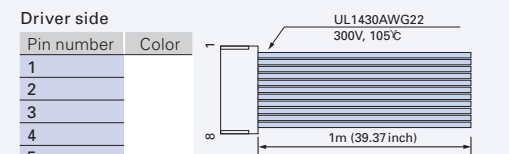
Ⓒ Stepping motor extension cable for 50mm (1.97inch)



| Model of cable | Length |
|----------------|----------------|
| PM-C03M0100-01 | 1m(39.37 inch) |

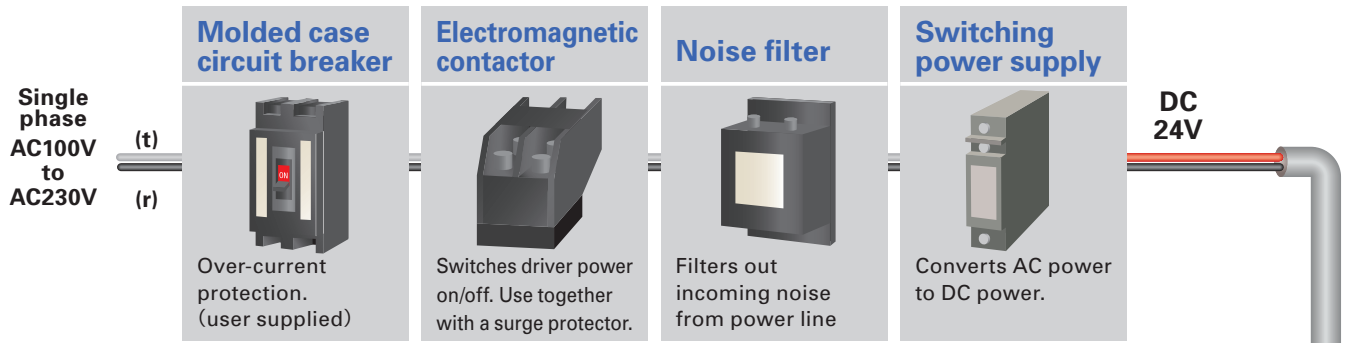
| Applicable stepping motor | |
|---------------------------|-----------------|
| 103H6332-03 □ 0 | 103H6333-03 □ 0 |
| 103H7332-03 □ 0 | 103H7333-03 □ 0 |
| 103H7832-03 □ 0 | 103H7833-03 □ 0 |

Ⓓ I/O signal cable

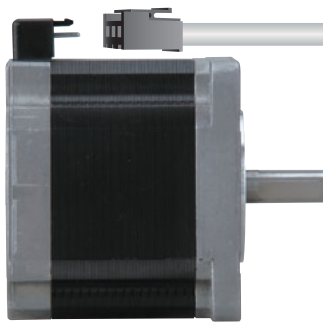


| Model of cable | Length |
|----------------|----------------|
| PM-C11S0100-01 | 1m(39.37 inch) |

System configuration

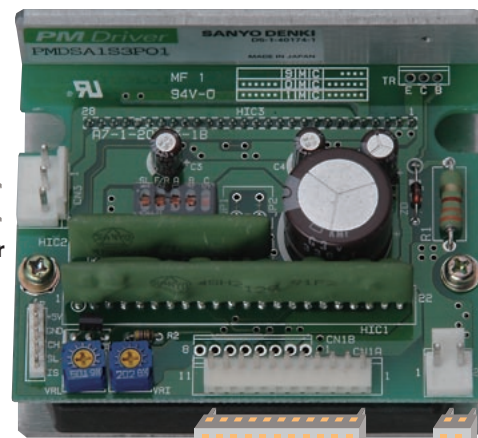


SANMOTION F3 3-phase STEPPING MOTOR



Standard model : H series motor
 □ 42 mm (□ 1.65 inch) / □ 50 mm (□ 1.97 inch) /
 □ 56 mm (□ 2.20 inch) / □ 60 mm (□ 2.36 inch)

SANMOTION F3 3-phase STEPPING DRIVER



③ Motor cable (optional)

② Motor connector (CN3)

① DC power cable (optional)

③ I/O signal connector (CN1A)

③ I/O signal cable (optional)

① DC power connector (CN2)

Controller



Can be connected to SANYO DENKI or third-party controllers.

DC input

Stepping motor

Dimensions

Input / Output signal standard

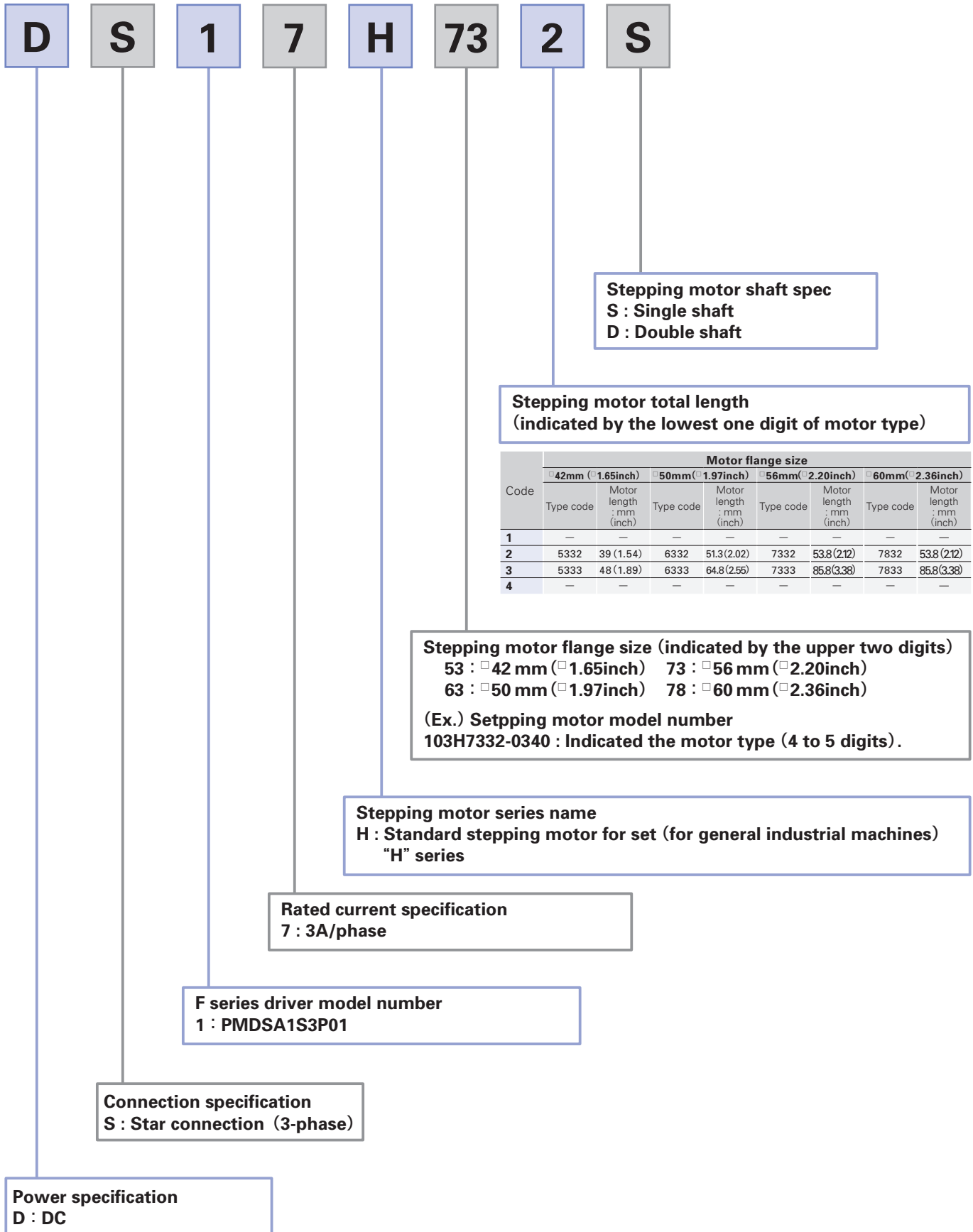
HIC for stepping motor

③ Connector sets

| Model | Used for | Contents of set | Quantity | Manufacturer | Applicable wire size | Crimp tool number |
|---|----------------------|------------------------------------|----------|---------------------|----------------------|-------------------|
| ① PM-AP-036 | DC source (CN2) | Applicable housing : VHR-2N | 1 | J.S.TMfg.Co.,Ltd | AWG18 ~ 22 | YC-160R |
| | | Applicable contact : SVH-21T-P1.1 | 2 | | | |
| ② PM-AP-041 □ 42 mm (□ 1.65 inch) | Stepping motor (CN3) | Applicable contact : SVH-21T-P1.1 | 1 | J.S.TMfg.Co.,Ltd | AWG22 | YC-160R |
| | | Applicable contact : 21T-P1.1 | 3 | | | |
| | | Applicable housing : HER-3-NATURAL | 1 | J.S.TMfg.Co.,Ltd | | YC-260R |
| | | Applicable contact : SHE-001T-P0.6 | 3 | | | |
| ② PM-AP-040 □ 50 mm (□ 1.97 inch) MIN. | | Applicable housing : VHR-3N | 2 | J.S.TMfg.Co.,Ltd | AWG18 ~ 22 | YC-160R |
| | | Applicable contact : SVH-21T-P1.1 | 6 | | | |
| ③ PM-AP-039 | I/O signals (CN1A) | Applicable housing : 5051-11 | 1 | Modex Japan Co.,Ltd | AWG22 ~ 28 | JHTR2262A |
| | | Applicable contact : 2759PBG | 11 | | | JHTR2262J |

Part number convention

The following set part number specifies a system with an F series driver (type code : PMDSA1S3P01) and a single shaft H series motor (type code : 103H7332-0340), 56mm (2.20inch) square flange, and 53.8mm (2.12inch) motor length.



Type code combination of F series driver + H series motor

| System type | Motor flange size | Basic step angle | Set part number | | Motor model number | | Rated current |
|----------------|--------------------------|------------------|-----------------|--------------|--------------------|---------------|---------------|
| | | | Single shaft | Double shaft | Single shaft | Double shaft | |
| Standard model | □ 42 mm (□ 1.65 inch) | 1.2° | DS17H532S | DS17H532D | 103H5332-0340 | 103H5332-0310 | 3A |
| | | 1.2° | DS17H533S | DS17H533D | 103H5333-0340 | 103H5333-0310 | 3A |
| | □ 50 mm (□ 1.97 inch) | 1.2° | DS17H632S | DS17H632D | 103H6332-0340 | 103H6332-0310 | 3A |
| | | 1.2° | DS17H633S | DS17H633D | 103H6333-0340 | 103H6333-0310 | 3A |
| | □ 56 mm (□ 2.20 inch) | 1.2° | DS17H732S | DS17H732D | 103H7332-0340 | 103H7332-0310 | 3A |
| | | 1.2° | DS17H733S | DS17H733D | 103H7333-0340 | 103H7333-0310 | 3A |
| | □ 60 mm (□ 2.36 inch) | 1.2° | DS17H782S | DS17H782D | 103H7832-0340 | 103H7832-0310 | 3A |
| | | 1.2° | DS17H783S | DS17H783D | 103H7833-0340 | 103H7833-0310 | 3A |

DC input

Stepping motor

Specifications of driver

■ F series driver

| Item | PMDSA1S3P01 | | |
|----------------------|--------------------------------|---|---|
| | Input source | Main power | DC24 V ± 10% |
| Control power | | — | |
| Source current | 3A | | |
| Basic specifications | Environment | Operating ambient temperature | 0 to +50°C |
| | | Conservation temperature | -20 to +70°C |
| | | Operating ambient humidity | 35 to 85% RH (no condensation) |
| | | Conservation humidity | 10 to 90% RH (no condensation) |
| | | Vibration resistance | 0.5G Tested under the following conditions, frequency range : 10 to 55Hz, direction : along the X, Y, and Z axes, for 2 hours |
| | | Impact resistance | Considering the NDS-C-0110 standard section 3.2.2 division "C", not influenced |
| | | Withstand voltage | Not influenced when AC500V is applied between power input terminal and cabinet for one minute |
| | | Insulation resistance | 10M Ω when measured with DC500V megohmmeter between |
| Mass (Weight) | 0.14kg (0.31lbs) | | |
| Applied Standards | UL Standards | UL508C | |
| | File No. | E179775 | |
| Functions | Selection function | Auto current down, step angle, pulse input method (optional) | |
| I/O signals | Command pulse input signal | Photo coupler input method, input resistance 330 Ω Input signal voltage : H = 4.0 to 5.5V L = 0 to 0.5V Maximum input frequency : 50kpulse/s | |
| | Power down input signal | Photo coupler input method, input resistance 330 Ω Input signal voltage : H = 4.0 to 5.5V L = 0 to 0.5V | |
| | Rotation monitor output signal | Open collector output by photo coupler Output signal standard, Vceo = 30V MAX., Ic = 5mA MAX. | |

Dimensions

Input / Output signal standard

HIC for stepping motor

Standard model

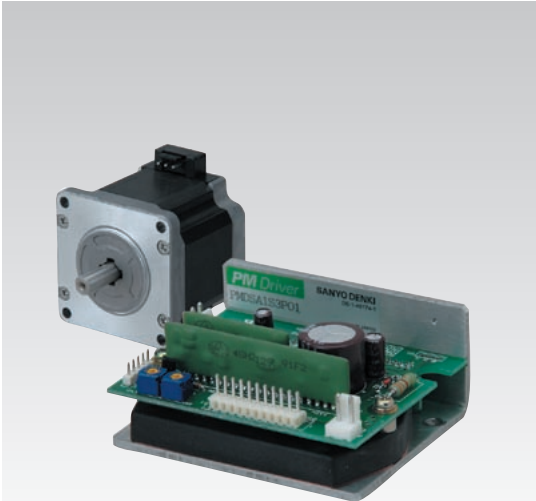
F series driver + H series motor

Motor flange size



| Size | Motor flange size | □ 42mm (□ 1.65inch) | |
|--|---|---------------------|------------------|
| | | 39mm (1.54inch) | 48mm (1.89inch) |
| Set part number | Single shaft | DS17H532S | DS17H533S |
| | Double shaft | DS17H532D | DS17H533D |
| Holding torque | N·m(oz·in) | 0.196 (27.75) | 0.265 (37.53) |
| Rotor inertia | $\times 10^{-4} \text{kg} \cdot \text{m}^2 (\text{oz} \cdot \text{in}^2)$ | 0.053 (0.29) | 0.065 (0.36) |
| Mass (Weight) | kg (lbs) | 0.3 (0.66) | 0.38 (0.84) |
| Allowable thrust load | N (lbs) | 10 (2.25) | 10 (2.25) |
| Allowable radial load ^(Note1) | N (lbs) | 35 (7.88) | 35 (7.88) |

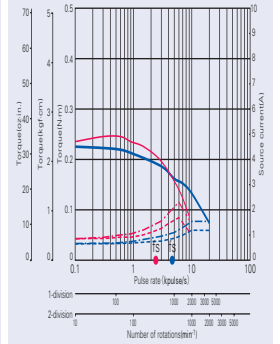
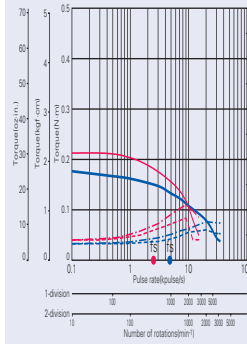
(Note1) When load is applied at 1/3 length from output shaft edge.



DC24V

Operating current:
3A/phase

- Pull-out torque
- - - Source current (load applied)
- · · Source current (no load)
- 1-division fs: Maximum self-start frequency when not loaded
- 2-division fs
- 1-division
- 2-division



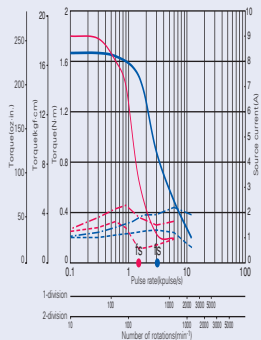
| Size | Motor flange size | □ 60mm (□ 2.36inch) | |
|--|---|---------------------|--|
| | | 85.8mm (3.98inch) | |
| Set part number | Single shaft | DS17H783S | |
| | Double shaft | DS17H783D | |
| Holding torque | N·m(oz·in) | 1.68 (237.90) | |
| Rotor inertia | $\times 10^{-4} \text{kg} \cdot \text{m}^2 (\text{oz} \cdot \text{in}^2)$ | 0.84 (4.59) | |
| Mass (Weight) | kg (lbs) | 1.34 (2.95) | |
| Allowable thrust load | N (lbs) | 20 (4.50) | |
| Allowable radial load ^(Note1) | N (lbs) | 80 (18) | |

(Note1) When load is applied at 1/3 length from output shaft edge.

DC24V

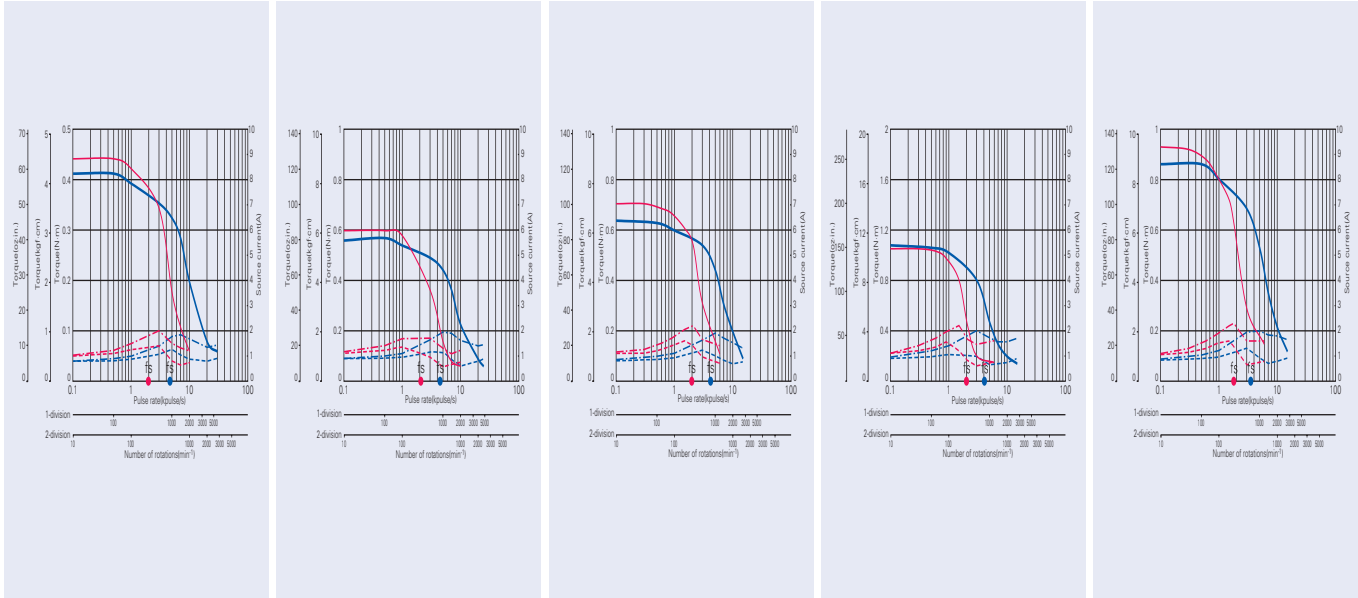
Operating current:
3A/phase

- Pull-out torque
- - - Source current (load applied)
- · · Source current (no load)
- 1-division fs: Maximum self-start frequency when not loaded
- 2-division fs
- 1-division
- 2-division



| □ 50mm (□ 1.97inch) | | □ 56mm (□ 2.20inch) | | □ 60mm (□ 2.36inch) | |
|--------------------------|--------------------------|--------------------------|--------------------------|--------------------------|--|
| 51.3mm (2.02inch) | 64.8mm (2.55inch) | 53.8mm (2.12inch) | 75.8mm (2.98inch) | 53.8mm (2.12inch) | |
| DS17H632S | DS17H633S | DS17H732S | DS17H733S | DS17H782S | |
| DS17H632D | DS17H633D | DS17H732D | DS17H733D | DS17H782D | |
| 0.44 (62.31) | 0.58 (82.13) | 0.69 (97.71) | 1.1 (155.77) | 0.95 (134.53) | |
| 0.12 (0.66) | 0.17 (0.93) | 0.21 (1.15) | 0.36 (1.97) | 0.4 (2.19) | |
| 0.5 (1.10) | 0.65 (1.43) | 0.65 (1.43) | 0.98 (2.16) | 0.78 (1.72) | |
| 15 (3.37) | 15 (3.37) | 15 (3.37) | 15 (3.37) | 20 (4.50) | |
| 50 (11.25) | 50 (11.25) | 60 (13.5) | 138 (31.05) | 80 (18) | |

DC input



Stepping motor

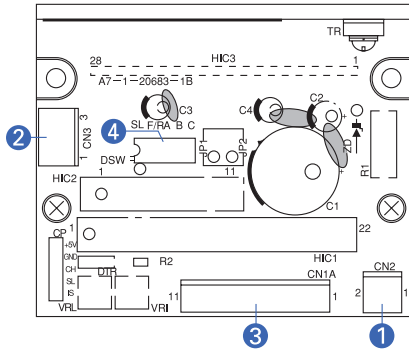
Dimensions

Input / Output signal standard

HIC for stepping motor

Operation, connection, and function

Each section name of the driver



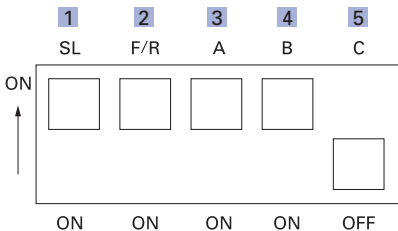
- 1 DC source connector (CN2)
.....Connect the DC source.
- 2 Stepping motor output connector (CN3)
.....Connect the stepping motor drive line.
- 3 I/O signal connector (CN1A)
.....Connect the I/O signal.
- 4 Function selection DIP switchpack (SL, F/R, A, B, C)
.....Select the function depending on your specification.

3 I/O signal function

| Signal name (abbreviation) | Pin number (CN1A) PMDSA1S3P01 | Function |
|-------------------------------|--|---|
| Pulse input (CW) | 1 | Inputs the drive pulse for the rotation in the CW direction. |
| Pulse input (CCW) | 3 | Inputs the drive pulse for the rotation in the CCW direction. |
| Power down input (PD) | 5 | Inputting the PD signal turns off the current that flows through the stepping motor. |
| Rotation monitor output (MON) | MON (collector) 7 MON (collector) 8 | Indicates ON when the exciting phase is at the origin position. In the full-step, outputs once for every 6 pulses. |

- The CW direction of the rotation of the stepping motor is the clockwise direction when viewing the stepping motor from the output axis side (flange side) .
The CCW direction is the counterclockwise direction when viewing the stepping motor from the output axis side (flange side) .

4 Function selection DIP switchpack



- The factory settings are shown in the figure above.
- Before changing the settings of the function selection DIP switches, turn off the source of the PM driver.

1 SL (auto current down selection) Select the auto current down function.

| SL | Automatic current reduction |
|-----|--|
| ON | 100% of current rating when stopped |
| OFF | Approx. 50% of current rating when stopped |

Note 1) The temperature increase in the motor driver can be controlled by setting SL to OFF (approx. 50% of the rated current) .

Note 2) The output torque when SL is OFF (approx. 50% of the rated current) is approx. 50% of that when SL is ON (100% of the rated current) .

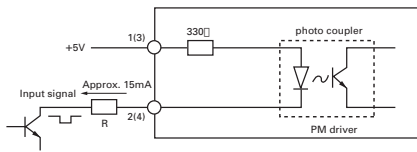
2 F/R selection (Note) This switch is not used. Do not set it to OFF.

3 · 4 · 5 A, B, C (step angle setting) Set the step angle

| DIP switch | | | Step angle | Number of drive pulses per one period of phase current |
|------------|-----|-----|--------------------------------------|--|
| A | B | C | | |
| ON | ON | OFF | Basic step angle 1/1 (1.2° pulse) | 6 |
| ON | OFF | | Basic step angle 1/2 (0.6° pulse) | 12 |
| OFF | ON | | Basic step angle 1/4 (0.3° pulse) | 24 |
| OFF | OFF | | Basic step angle 1/8 (0.15° pulse) | 48 |
| OFF | OFF | ON | Basic step angle 1/16 (0.075° pulse) | 48 |

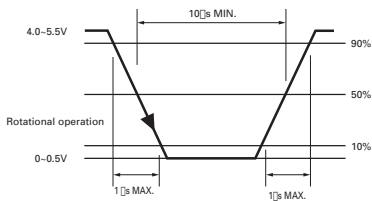
- When the DIP switch "C" = "ON" (1/16 division) , the internal circuit (stepping motor) operates at the rising edge and falling edge of the drive pulse. If the duty ratio of the drive pulse moves out of the adjustment significantly by 50%, operation becomes unstable.

Input circuit configuration (CW and CCW Pulse input)

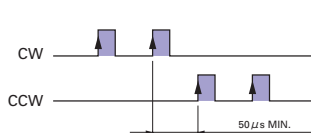


- Pulse duty : 50% MAX.
- When the crest value of the input signal is 5V, the external limit resistance R must be 0 Ω . When the crest value of the input signal exceeds 5V, use the external limit resistance R to limit the input current to approximately 15mA.

Input signal specifications

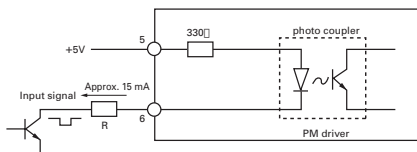


Timing of the command pulse



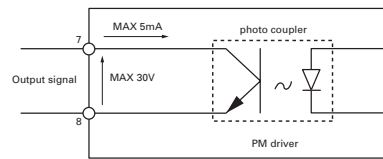
- The internal photo coupler turns ON within the and, when the DIP switch “C” = “OFF”, the internal circuit (stepping motor) operates at the rising edge of “ON” of the photo coupler.
- When applying the pulse to CW, turn OFF the CCW side internal photo coupler.
- When applying the pulse to CCW, turn OFF the CW side internal photo coupler.
- When the DIP switch “C” = “ON”, the internal circuit (stepping motor) operates at the rising edge and falling edge of “ON” of the photo coupler.

Input circuit configuration (power down input)



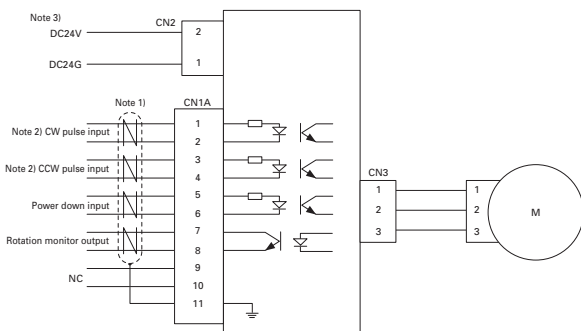
- When the crest value of the input signal is 5V, the external limit resistance R must be 0 Ω .When the crest value of the input signal exceeds 5V, use the external limit resistance R to limit the input current to approximately 15mA.

Output circuit configuration (rotation moni for output)



- Rotation monitor signal output
Contact type : Open collector output by photo coupler
Contact capacity : DC30V, 5mA MAX.

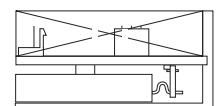
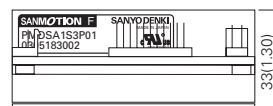
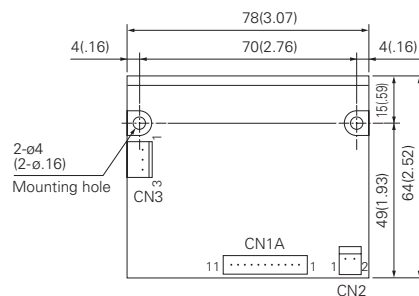
External wiring diagram



- (Note 1) Use twisted pair shielded cables.
- (Note 2) Switching between the “2-input mode (CW and CCW input method)” and the “Pulse and direction mode (CK, U/D)” is an optional function. For more information, contact us.
- (Note 3) Pay particular attention to the CN2 pin assignment.

Dimensions [Unit : mm (inch)]

PMSA1S3P01 (photo coupler input method)





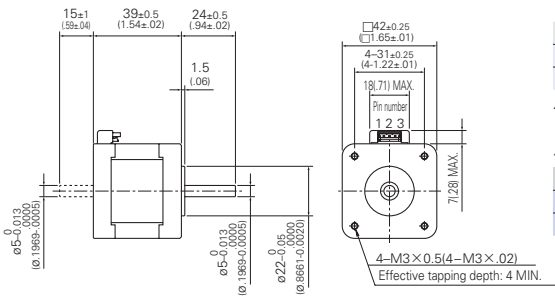
3-phase stepping motor

42mm sq. (1.65inch sq.)

103H533 □
1.2°/step HB type

| Model | Holding torque at 2-phase energization | Rated current | Wiring resistance | Winding inductance | Rotor inertia | Mass (Weight) |
|----------------------|--|------------------------|-------------------|--------------------|---------------|---|
| Single shaft | Double shafts | [N · m (oz · in) MIN.] | A/phase | Ω /phase | mH/phase | [×10 ⁻⁴ kg · m ² (oz · in ²)] [kg (lbs)] |
| 103H5332-0340 | -0310 | 0.196 (27.75) | 3 | 0.84 | 0.5 | 0.053 (0.29) 0.3 (0.66) |
| 103H5333-0340 | -0310 | 0.265 (37.53) | 3 | 0.94 | 0.5 | 0.065 (0.36) 0.38 (0.84) |

Dimensions [unit : mm (inch)]



| Set part number | Motor model number | Motor length |
|-----------------|--------------------|-----------------|
| DS17H532△ | 103H5332-03△0 | 39mm (1.54inch) |
| DS17H533△ | 103H5333-03△0 | 48mm (1.89inch) |

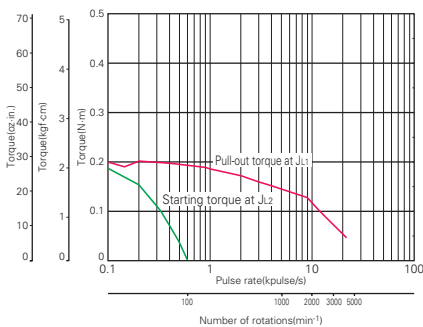
△ indicates motor shaft specification

△ : Motor shaft spec

| Motor shaft spec | Motor model number | Set part number |
|------------------|--------------------|-----------------|
| Single shaft | 4 | S |
| Double shafts | 1 | D |

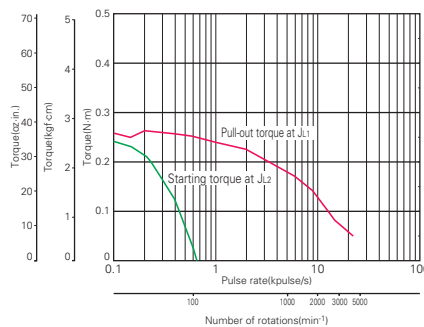
Pulse rate-torque characteristics

103H5332-0340



Sanyo constant current circuit
Source voltage : DC24V · operating current : 3A/phase,
2-phase energization (full step)
J₁=[0.94×10⁻⁴kg · m²(5.14oz · in²) use the rubber coupling.]
J₂=[0.8×10⁻⁴kg · m²(4.37oz · in²) use the direct coupling.]

103H5333-0340

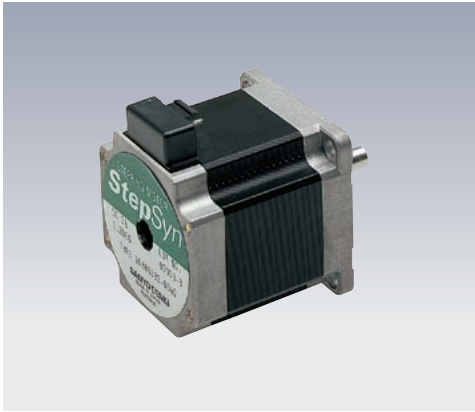


Sanyo constant current circuit
Source voltage : DC24V · operating current : 3A/phase,
2-phase energization (full step)
J₁=[0.94×10⁻⁴kg · m²(5.14oz · in²) use the rubber coupling.]
J₂=[0.8×10⁻⁴kg · m²(4.37oz · in²) use the direct coupling.]

3-phase stepping motor

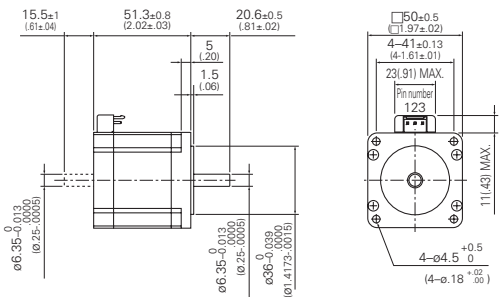
50mm sq. (1.97inch sq.)

103H633 □
1.2°/step HB type



| Model | Holding torque at 2-phase energization | Rated current | Wiring resistance | Winding inductance | Rotor inertia | Mass (Weight) |
|----------------------|--|------------------------|-------------------|--------------------|---------------|---|
| Single shaft | Double shafts | [N · m (oz · in) MIN.] | A/phase | Ω /phase | mH/phase | [×10 ⁻⁴ kg · m ² (oz · in ²)] [kg (lbs)] |
| 103H6332-0340 | -0310 | 0.44 (62.31) | 3 | 1.3 | 1.6 | 0.12 (0.66) 0.5 (1.10) |
| 103H6333-0340 | -0310 | 0.58 (82.13) | 3 | 1.6 | 1.6 | 0.17 (0.93) 0.65 (1.43) |

Dimensions [unit : mm (inch)]



| Set part number | Motor model number | Motor length |
|-----------------|--------------------|-------------------|
| DS17H632△ | 103H6332-03△0 | 51.3mm (2.02inch) |
| DS17H633△ | 103H6333-03△0 | 64.8mm (2.55inch) |

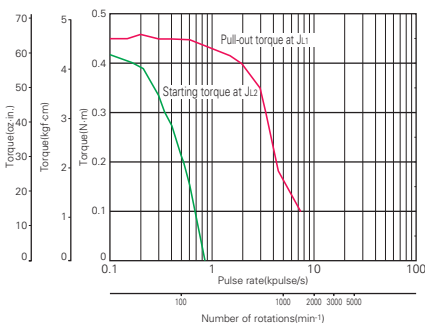
△ indicates motor shaft specification

△ : Motor shaft spec

| Motor shaft spec | Motor model number | Set part number |
|------------------|--------------------|-----------------|
| Single shaft | 4 | S |
| Double shafts | 1 | D |

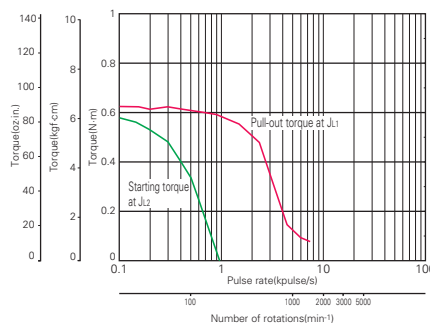
Pulse rate-torque characteristics

103H6332-0340

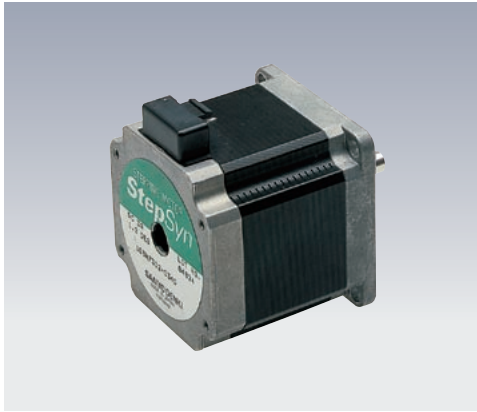


Sanyo constant current circuit
Source voltage : DC24V · operating current : 3A/phase,
2-phase energization (full step)
J₁=[0.94×10⁻⁴kg · m²(5.14oz · in²) use the rubber coupling.]
J₂=[0.8×10⁻⁴kg · m²(4.37oz · in²) use the direct coupling.]

103H6333-0340



Sanyo constant current circuit
Source voltage : DC24V · operating current : 3A/phase,
2-phase energization (full step)
J₁=[0.94×10⁻⁴kg · m²(5.14oz · in²) use the rubber coupling.]
J₂=[0.8×10⁻⁴kg · m²(4.37oz · in²) use the direct coupling.]



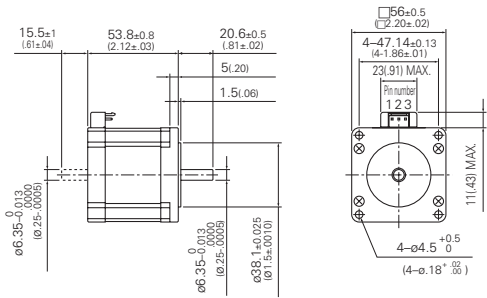
3-phase stepping motor

56mm sq. (2.20inch sq.)

103H733 □
1.2°/step HB type

| Model | Holding torque at 2-phase energization | Rated current | Wiring resistance | Winding inductance | Rotor inertia | Mass (Weight) |
|----------------------------|--|---------------|-------------------|--------------------|---|---------------|
| Single shaft | [N · m (oz · in) MIN.] | A/phase | Ω /phase | mH/phase | [×10 ⁻⁴ kg · m ² (oz · in ²)] | [kg (lbs)] |
| 103H7332-0340 -0310 | 0.69 (97.71) | 3 | 1.4 | 1.8 | 0.21 (1.15) | 0.65 (1.43) |
| 103H7333-0340 -0310 | 1.1 (155.77) | 3 | 1.7 | 2.4 | 0.36 (1.97) | 0.98 (2.16) |

Dimensions [unit : mm (inch)]



| Set part number | Motor model number | Motor length |
|-----------------|--------------------|-------------------|
| DS17H732△ | 103H7332-03△0 | 53.8mm (2.12inch) |
| DS17H733△ | 103H7333-03△0 | 75.8 (2.98inch) |

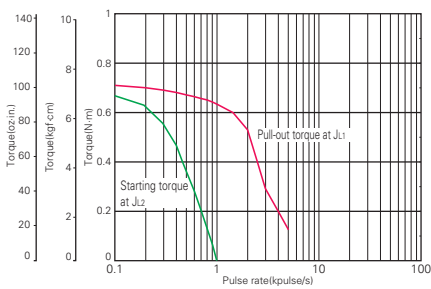
△ indicates motor shaft specification

△ : Motor shaft spec

| Motor shaft spec | Motor model number | Set part number |
|------------------|--------------------|-----------------|
| Single shaft | 4 | S |
| Double shafts | 1 | D |

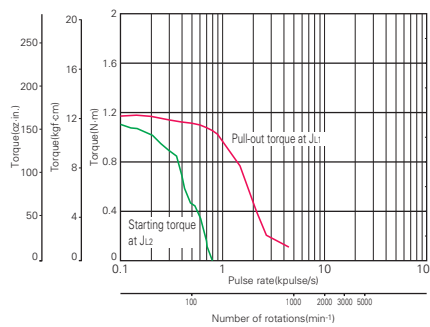
Pulse rate-torque characteristics

103H7332-0340



Sanyo constant current circuit
Source voltage : DC24V · operating current : 3A/phase,
2-phase energization (full step)
J₁₁=[0.94×10⁻⁴kg · m²(5.14oz · in²) use the rubber coupling.]
J₁₂=[0.8×10⁻⁴kg · m²(4.37oz · in²) use the direct coupling.]

103H7333-0340



Sanyo constant current circuit
Source voltage : DC24V · operating current : 3A/phase,
2-phase energization (full step)
J₁₁=[2.6×10⁻⁴kg · m²(14.22oz · in²) use the rubber coupling.]
J₁₂=[2.6×10⁻⁴kg · m²(14.22oz · in²) use the rubber coupling.]

3-phase stepping motor

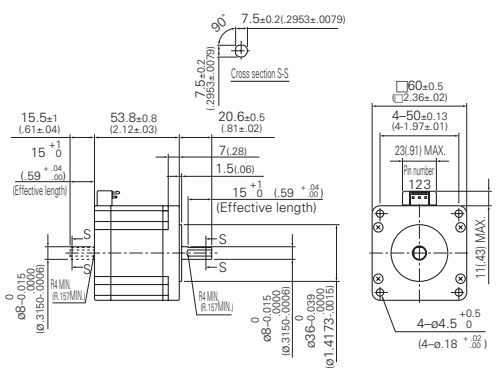
60mm sq. (2.36inch sq.)

103H783 □
1.2°/step HB type



| Model | Holding torque at 2-phase energization | Rated current | Wiring resistance | Winding inductance | Rotor inertia | Mass (Weight) | |
|---------------|--|------------------------|-------------------|--------------------|---------------|---|-------------|
| Single shaft | Double shafts | [N · m (oz · in) MIN.] | A/phase | Ω /phase | mH/phase | [×10 ⁻⁴ kg · m ² (oz · in ²)] [kg (lbs)] | |
| 103H7832-0340 | -0310 | 0.95 (134.53) | 3 | 1.5 | 1.8 | 0.4 (2.19) | 0.78 (1.72) |
| 103H7833-0340 | -0310 | 1.68 (237.90) | 3 | 2 | 3.2 | 0.84 (4.59) | 1.34 (2.95) |

Dimensions [Unit : mm (inch)]



| Set part number | Motor model number | Motor length |
|-----------------|--------------------|-------------------|
| DS17H782△ | 103H7832-03△0 | 53.8mm (2.12inch) |
| DS17H783△ | 103H7833-03△0 | 85.8 (3.98inch) |

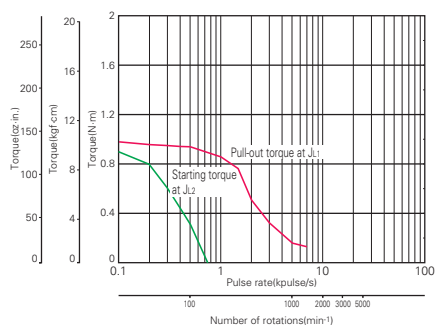
△ indicates motor shaft specification

△ : Motor shaft spec

| Motor shaft spec | Motor model number | Set part number |
|------------------|--------------------|-----------------|
| Single shaft | 4 | S |
| Double shafts | 1 | D |

Pulse rate-torque characteristics

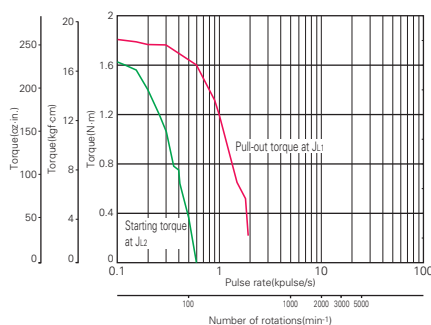
■ 103H7832-0340



Sanyo constant current circuit

Source voltage : DC24V · operating current : 3A/phase,
2-phase energization (full step)
J₁=[2.6×10⁻⁴kg·m² (14.22oz·in²) use the rubber coupling.]
J₂=[2.6×10⁻⁴kg·m² (14.22oz·in²) use the rubber coupling.]

■ 103H7833-0340



Sanyo constant current circuit

Source voltage : DC24V · operating current : 3A/phase,
2-phase energization (full step)
J₁=[7.4×10⁻⁴kg·m² (40.46oz·in²) use the rubber coupling.]
J₂=[7.4×10⁻⁴kg·m² (40.46oz·in²) use the rubber coupling.]

General specifications

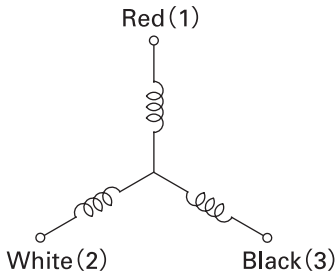
| | 103H533 □ | 103H633 □ | 103H733 □ | 103H783 □ |
|--|---|---|---|---|
| Insulation class | B species (130°) | | | |
| Insulation resistance | Not less than 100M Ω between winding and frame by DC500V megger at normal temperature and humidity. | | | |
| Withstand voltage | Without abnormality when applying 50/60 Hz, 1000V AC (500V AC for 103-530□ and 103H533□) for 1 minute (leakage current 1mA) between winding and frame at normal temperature and humidity. | | | |
| Operating environment | Ambient temperature : -10 to +50°C | | | |
| | Ambient humidity : 20 to 90% (no condensation) | | | |
| Winding temperature rise | 80 K MAX (Based on Sanyo Denki standard.) | | | |
| Standing angle error | ± 0.06° | ± 0.06° | ± 0.06° | ± 0.06° |
| Axial play | 0.075mm (0.003inch) MAX. Load : 9N (2lbs) | 0.075mm (0.003inch) MAX. Load : 9N (2lbs) | 0.075mm (0.003inch) MAX. Load : 9N (2lbs) | 0.075mm (0.003inch) MAX. Load : 9N (2lbs) |
| Radial play (Note 1) | 0.025 mm (0.001inch) MAX. Load 4.4N (1lbs) | 0.025 mm (0.001inch) MAX. Load : 4.4N (1lbs) | 0.025 mm (0.001inch) MAX. Load : 4.4N (1lbs) | 0.025 mm (0.001inch) MAX. : Load 4.4N (1lbs) |
| Shaft runout | 0.025 mm (0.001inch) | | | |
| Concentricity of mounting spigot relative to shaft | Φ 0.05mm (0.002inch) | Φ 0.075mm (0.003inch) | Φ 0.075mm (0.003inch) | Φ 0.075mm (0.003inch) |
| Perpendicularity of mounting surface relative to shaft | 0.1mm (0.004inch) | 0.1mm (0.004inch) | 0.075mm (0.003inch) | 0.075mm (0.003inch) |

(Note1) When load is applied at 1/3 length from output shaft edge.

Internal connection and rotational direction

Internal connection

() Connector pin number

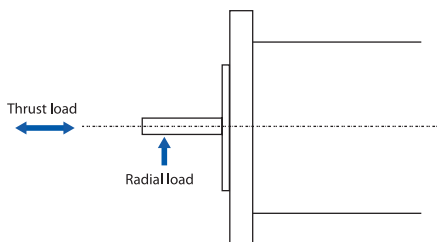


Direction of motor rotate

When DC-energized in the order below, the rotational direction must be counterclockwise viewed from the output axis side.

| Type | Color of lead | | |
|--------------------|---------------|-----------|-----------|
| | Red (1) | White (2) | Black (3) |
| Energization order | 1 | + | - |
| | 2 | + | - |
| | 3 | + | - |
| | 4 | - | + |
| | 5 | - | + |
| | 6 | - | + |

Allowable radial load / thrust load



| Flange size | Model number | Distance from end of shaft : mm (inch) | | | | Thrust load : N(lbs) |
|---------------------|--------------|--|---------|----------|----------|----------------------|
| | | 0 | 5 | 10 | 15 | |
| □ 42mm (□ 1.65inch) | 103H53 □□ | 24 (5) | 30 (6) | 38 (8) | 53 (11) | 10 (2.25) |
| □ 50mm (□ 1.97inch) | 103H63 □□ | 71 (15) | 87 (19) | 115 (25) | 167 (37) | 15 (3.37) |
| □ 56mm (□ 2.2inch) | 103H73 □□ | 52 (11) | 65 (14) | 85 (19) | 123 (27) | 15 (3.37) |
| □ 60mm (□ 2.36inch) | 103H783 □ | 70 (15) | 87 (19) | 114 (25) | 165 (37) | 20 (4.50) |



3-phase stepping motor drive IC for universal controller

PMM3501

DC input

Stepping motor

Dimensions

Input / Output signal standard

HIC for stepping motor

Features

- Micro step sine wave drive driver
- Built-in current detection resistor
- Adopting MOSFET as the power drive device to reduce heat generation
- All-in-one package reducing the number of parts of the peripheral circuit
- 5 energization modes available with an external bit signal

Maximum ratings (Tc=25°)

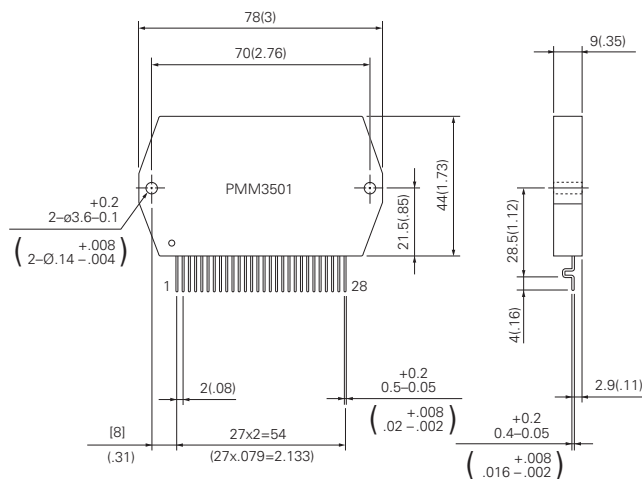
| Item | Symbol | Condition | Rating | Unit |
|------------------------------------|---------------------|--------------------------------------|-------------|------|
| Source voltage-1 | V _{CC1max} | V _{CC2} = 0V | 30 | V |
| Source voltage-2 | V _{CC2max} | Without signal | 7 | V |
| Input voltage | V _{inmax} | Logic input terminal | 7 | V |
| Phase current | I _{Omax} | V _{CC2} = 5V, Clock ≥ 100Hz | 6 | A |
| Board temperature during operation | T _{Cmax} | No condensation at low temperature | 0 to +105 | °C |
| Joint temperature | T _{jmax} | — | +150 | °C |
| Conservation temperature | T _{stg} | — | -40 to +125 | °C |

Recommended operating conditions (Ta=25°)

| Item | Symbol | Condition | Rating | Unit |
|--------------------------------|------------------|---|-----------------------|------|
| Source voltage-1 | V _{CC1} | With signal | 24 ± 10% | V |
| Source voltage-2 | V _{CC2} | With signal | 5.0 ± 5% | V |
| Input voltage | V _{IH} | — | 0 to V _{CC2} | V |
| Phase current-1 | I _{O1} | Without heat sink | 1.7 | A |
| Phase current-2 | I _{O2} | T _c = 105°C, Clock ≥ 100Hz | 4.4 | A |
| Clock frequency | Clock | Pin 11 input frequency (pulse duty : 50%) | 0 to 120 | kHz |
| Phase driver withstand voltage | V _{DSS} | I _O = 10mA (T _c = 25°C) | 60 | V |

External Figures [unit : mm (inch)]

| Pin number | Name |
|------------|-------------------|
| 1. | V _{CC1B} |
| 2. | V _{CC1C} |
| 3. | — |
| 4. | UO |
| 5. | WO |
| 6. | VO |
| 7. | V _Z |
| 8. | V _{CC1A} |
| 9. | GND2 |
| 10. | V _{ref} |
| 11. | Clock |
| 12. | Mode A |
| 13. | Mode B |
| 14. | Hold |
| 15. | CW/CCW |
| 16. | Enable |
| 17. | Reset |
| 18. | Mode C |
| 19. | GND1 |
| 20. | MOI |
| 21. | V _{CC2} |
| 22. | — |
| 23. | UI |
| 24. | VI |
| 25. | WI |
| 26. | — |
| 27. | P.GNDA |
| 28. | P.GNDB |



Electrical characteristics (Tc=25°, Vcc1=24V, Vcc2=5V)

| Item | Symbol | Condition | Rating | | | Unit |
|------------------------------|--------|--|--------|----------|----------|------------------|
| | | | MIN | Standard | MAX | |
| Vcc2 source current | Icco | Enable = "L" | — | 6.1 | 12 | mA |
| Effective output current | Ioe | Each phase R/L = 2 Ω /6mH 2W2-3phase energization | 0.92 | 1.03 | 1.14 | A _{rms} |
| FET diode forward voltage | Vdf | If = 1A (RL=23 Ω) | — | 1.0 | 1.6 | V |
| Output saturation voltage | Vsat | RL = 23 Ω | — | 0.30 | 0.40 | V |
| Output leak current | IOL | RL = 23 Ω | — | — | 0.1 | mA |
| "H" level input voltage | VIH | Pins 11 to 18 | 4.0 | — | — | V |
| "L" level input voltage | VIL | Pins 11 to 18 | — | — | 1.0 | V |
| Input current | IIL | Pins 11 to 18 = GND level Pull-up resistance : 20k Ω | 115 | 250 | 550 | μA |
| Vref input voltage | VrH | Pin 10 | 0 | — | Vcc2 / 2 | V |
| Vref input current | Ir | Pin 10 = 2.5 V Internal resistance : 4k Ω | 440 | 625 | 810 | μA |
| "H" level MOI output voltage | VOH | Pins 20-19 = 820k Ω | 2.5 | — | — | V |
| "L" level MOI output voltage | VOL | Pins 21-20 = 1.6k Ω | — | — | 0.4 | V |
| PWM frequency | Fc | — | 23 | 31 | 39 | kHz |

Function of each terminal

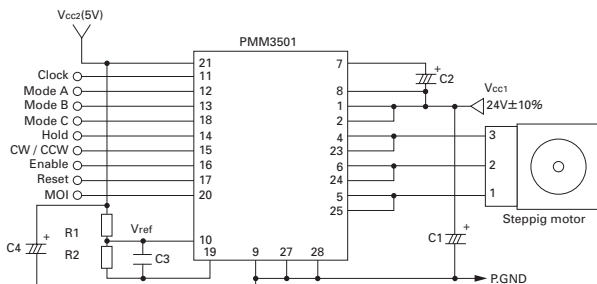
| Function of each terminal | Function | Input condition for operation |
|---------------------------|--|--|
| Vref | Motor current setting input | — |
| Clock | Pulse input for motor drive | Mode C = "H" : Rising edge operation Mode C = "L" : Rising edge and falling edge operation |
| Hold | Pause input | Hold = "L" level |
| CW/CCW | Motor rotational direction setting input | "H" level = CW rotation "L" level = CCW rotation |
| Enable | Power off input | Enable = "L" level |
| Reset | System reset | Reset = "L" level |
| MOI | Rotation monitor output | H level output once for each phase current period |

Energization mode table

| Input | | | Condition energization mode | 1 step angle (degree) | Basic step division |
|--------|--------|--------|-----------------------------|-----------------------|---------------------|
| Mode A | Mode B | Mode C | | | |
| L | L | H | 2EX | 1.2 | 1 |
| L | H | H | 2-3EX | 0.6 | 2 |
| H | L | H | W2-3EX | 0.3 | 4 |
| H | H | H | 2W2-3EX | 0.15 | 8 |
| H | H | L | 4W2-3EX | 0.075 | 16 |

- When Mode C = "L", 1 step operation is performed for each rising edge and falling edge of the Clock pulse. If the duty ratio of the drive pulse moves out of the adjustment significantly by 50%, operation becomes unstable.

Example of Application Circuit



Recommended circuit part constants

| C1 | C2 | C3 | C4 |
|--------|--------|--------|-------|
| 470 μF | 6.8 μF | 0.1 μF | 10 μF |

- For the R1 and R2 constants, determine the Vref voltage according to the following equation.
Vref(V) = motor current adjustment value(A/phase) x 0.41
Notice that 100Ω is recommended for R2 due to the configuration of the internal circuit of the PMM3501.
- Place the GND side of the source by-pass capacitor of Vcc1(C1) as close to pins 27 and 28 as possible to reduce noise.
- Set "RESET" to High 10μsecs after "+5V" rises above "+4.5V", as shown in Fig 1. When turning on the power with "ENABLE" set to Low, set "RESET" to High after "+24V" rises completely.

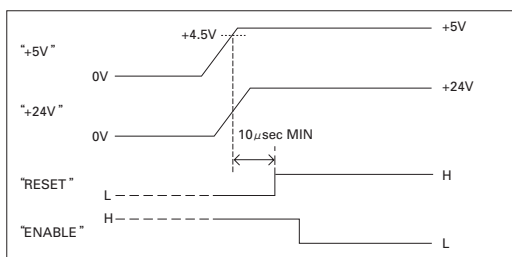


Fig1

Safety Consideration

The drivers and stepping motors are the products designed to be used for the general industrial devices.

When using those, pay enough attention to the following points.

- Read thoroughly the Operation Manual prior to placement, assembly and/or operation in order to use the product properly.
- Refrain from modifying or processing the product in any way.
- Consult with the distributor or professional experts for placement or maintenance services of the product.
- In case of the following uses of the product, contact with us for the special care required to the operation, maintenance and management such as multiplexing the system, installing an emergency electric generator set, or so forth.

- 1 Use for the medical devices concerned with a fatal accident.
- 2 Use for trains, elevators, and so forth that are likely to cause an accident resulting in injury, damage or death.
- 3 Use in the computer system highly influential to the social life or the public systems.
- 4 Use in other devices highly influential to maintaining the human safety or the public functions.

In addition to the above, consult with us for use in such a vibration environment as automobile or transportation.

Read the Operation Manual thoroughly prior to the use (placement, operation, maintenance and inspection) to put the product in use properly.

Make yourself knowledgeable and familiarize with the devices, safety issues and cautions before handling the product.

After reading the Operation Manual or the like, keep it in the place where the users can refer to whenever necessary.

Indication by (Warning Label) on the product

Either or all of the following indications are given by the Warning Labels depending on the type of the driver or stepping motor.



This label is stuck near the high voltage part such as the electrically charged or cover-protected section, warning that the place where it is likely to cause an electric shock.



This label is stuck on the place where the driver or stepping motor body should be easily acknowledged, warning that it is likely to cause burns from high temperature.



必ずアース線を
接続して下さい
Use proper
grounding
techniques.

This label is stuck near the GND terminals of the driver or stepping motor for which grounding is required, suggesting that the terminals should be actually grounded.



危険
WARNING
感電注意
May Cause
electric shock

This label is stuck for the driver or stepping motor to which the power source is applied in the voltage exceeding the safety standard, drawing attention against the electric shock.

Safety ranks of the cautions

Following four ranks are provided.



DANGER Improper operations or use is most likely to result in serious injury or death.



CAUTION Improper operations or use is likely to result in average or minor injury, or in property damage.

In spite of the cautions with the $\triangle_{CAUTION}$ CAUTION label, it may cause serious results. Either the contents of the labels is describing important cautions to be followed inevitably.



PROHIBITED Indicates what shall not be done.



COMPULSORY Indicates what shall be done.

DANGER

< General matters >

1. Do not use the product in an explosive, flammable or corrosive atmosphere, watery place or near a combustible material. Doing so may cause injury or fire.
2. Have a person with expert knowledge for performing the transportation, placement, wiring, operation, maintenance or inspection of the product. Without such knowledge, it may cause an electric shock, injury or fire.
3. Do not work for wiring, maintenance servicing or inspection with the electric power on. Perform either of those five minutes after turning the power off, or otherwise, it may cause an electric shock.
4. When the protective functions of the product is activated, turn the power off immediately and eliminate the cause. If continuing the operation without eliminating the cause, the product may operate improperly and cause injury or a breakdown of the system devices.
5. Stepping motor may run out of order at the operating and stopping occasions, depending on the magnitude of the load. Put the product into use after confirming with the adequate trial test operation in the maximum load conditions that the product performs reliable operation. Doing otherwise may cause a breakdown of the system. (Should the product run out of order in the use to drive upward/downward, it may cause a fall of the load.)
6. Do not touch the internal parts of the driver. Doing so may cause an electric shock.

< Wiring >

7. Do not connect the stepping motor directly with the commercial power outlet. Doing so may cause an electric shock, injury or fire. The power shall be supplied to the stepping motor through the driving circuit.
8. Use the electric power source within the rated input voltage. Using otherwise may cause fire or an electric shock.
9. Connect the driver and stepping motor to the ground. Using without grounding may cause an electric shock.
10. Do not harm, forcibly put a stress, or load a heavy article on the cable or get it caught between the articles. Doing so may cause an electric shock.
11. Perform wiring with the power cable as instructed by the wiring diagram or the Operation Manual. Doing otherwise may cause an electric shock or fire.

< Operation >

12. Be sure not to touch the rotating part of the stepping motor during its operation. Touching it may cause injury.
13. Neither reach or touch the electric terminals while electric power is on. Doing so may cause an electric shock.
14. Never disconnect any of the connectors while electric power is on. Doing so may cause an electric shock and corruption.

< General matters >

1. Prior to placement, operation, maintenance servicing or inspection, be sure to read the Operation Manual and follow the instructions to perform those. Failure to follow the instructions may cause an electric shock, injury or fire.
2. Do not use the driver or the stepping motor outside the specified conditions. Doing so may cause an electric shock, injury or fire.
3. Do not insert a finger or a thing into the opening of the product. Doing so may cause an electric shock, injury or fire.
4. Do not use the damaged driver or stepping motor. Doing so may cause injury, fire or the like.
5. Use the driver and stepping motor in the designated combination. Using otherwise may cause fire or a trouble.
6. Be careful that the temperature rises in the operating driver, stepping motor or peripheral devices. Failure to be careful may cause a burn.

< Unpacking >

7. Unpack while confirming the ceiling. Failure to do so may cause injury.
8. Confirm if the product is the one having been ordered. Installing an incorrect product may cause a breakdown.

< Wiring >

9. Do not perform measurement of the insulation resistance or withstand insulation voltage of the product. Doing so may cause a breakdown. Instead, contact with us for such inspection.
10. Perform wiring conforming to the technical standards of electric facility or the internal rule. Doing otherwise may cause burning or fire.
11. Ensure that wiring has been correctly done. Operating without correct wiring may cause the stepping motor to run out of control and result in injury.
12. Take insulation process for the attached condenser or the external resistance connection terminals. Failure to do so may cause an electric shock.

< Placement >

13. Do not climb or attach a heavy article on the product. Doing so may cause injury.
14. Neither block nor stuff the aspiration/exhaust vent with a foreign particle. Doing so may cause fire.
15. Follow the instructions for the direction to place. Failure to do so may cause a trouble.
16. Keep a distance as instructed by the Operation Manual for the driver from the inner surface of the control console or other devices. Failure to do so may cause a trouble.
17. Place the product with a great care so as to prevent from the danger such as a tumble or a turnover.

CAUTION

18. Mount the product on an incombustible material such as metal. Doing otherwise may cause fire.
19. Confirm the rotating direction before connecting with the mechanical device. Failure to do so may cause injury or a breakdown.
20. Do not touch the motor output spindle (including the key slot and gears) with a bare hand. Doing so may cause injury.

< Operation >

21. The stepping motor is not equipped with any protective device. Take protective measures using an over-current protective relay, a ground fault interrupter, a protective device from excess temperature, and an emergency stopping device. Failure to do so may cause injury or fire.
22. Do not touch the product for a period after the power is on or has been turned off, since the driver and stepping motor remain in the high temperature. Doing so may cause burns. Especially the temperature rises considerably of the stepping motor depending on the operating conditions. Use the motor on the condition so that its surface temperature becomes 100°C or under.
23. Stop the operation immediately when an emergency occurs. Failure to do so may cause an electric shock, injury or fire.
24. Do not change adjustment to an extreme, for such a change results in the unstable operation. Doing so may cause injury.
25. When conducting the trial operation, make the stepping motor fixed firmly, and confirm the operation by disconnecting with the mechanical system before connecting with it. Failure to do so may cause injury.
26. When the alarm has been activated, eliminate the cause and ensure the safety to resume operation. Failure to do so may cause injury.
27. When the electric power recovers after the momentary interruption, do not approach the devices because the system may re-start operation by itself. (Set the system so as to secure the safety even when it re-start on such occasion.) Failure to do so may cause injury.
28. Confirm that the electric power supply is all proper conforming to the specifications. Failure to do so may cause a trouble.
29. The brake mechanism of the motor with the electro-magnetic brake is to hold the movable section and the motor position. Do not use it as a safety measure, or doing so may cause the breakdown of the system.
30. Fix the key firmly when operating the motor with key individually. Failure to do so may cause injury.

< Maintenance services >

31. Be careful when performing maintenance services or inspection about the temperature which rises highly in the driver and stepping motor frame. Failure to do so may cause burns.
32. It is recommended to replace the electrolytic condenser of the driver with a new one for securing the preventive measure after using for 5 years, the expected life in the average 40°C. The expected life of the fuse and cooling fan motor is 10 years in the average 40°C. Thus, the periodical replacement is recommended.
33. Contact with us for repair. If the product is disassembled by the user, it may put it out of action.

< Transportation >

34. Handle the product with care during transportation so as to prevent from the danger such as a tumble or a turnover.
35. Do not hold with the cable or the motor spindle. Doing so may cause a trouble or injury.

< Retirement >

36. When scrapping the driver or stepping motor, treat it for the general industrial waste.

PROHIBITED

< Storage >

1. Avoid the place exposed to rain or water drops, or in an environment with hazardous gas or liquid for storing the product. Failure to do so may cause a trouble.

< Maintenance services >

2. Do not assemble or repair the product. Doing so may cause fire or an electric shock.

< General matters >

3. Do not remove the rating plate.

COMPULSORY

< Storage >

1. Store the product within the specified conservation temperature and humidity in the place not exposed to the sun beam.
2. If the driver has been stored for a long period (3 years or longer for a guide), consult with us. The capacitance may have decreased with the electrolytic condenser due to the long period storage, and it may cause a trouble.

< Operation >

3. Install an external emergency stop circuit to turn the power off for the instant halt of operation.
4. Put the product into operation in the specified ambient temperature and humidity.

< Transportation >

5. Excess loading of the product on the carrier may cause the load to fall in pieces. Follow the instructions given outside the package.

Inquiry Check Sheet

Please provide the following information when placing an order or making an inquiry.
Also feel free to include any questions that require our attention.

Company Name: _____

Date: _____

Department: _____

To contact us: _____

Telephone : _____

Phone: +81 3 3917 5157

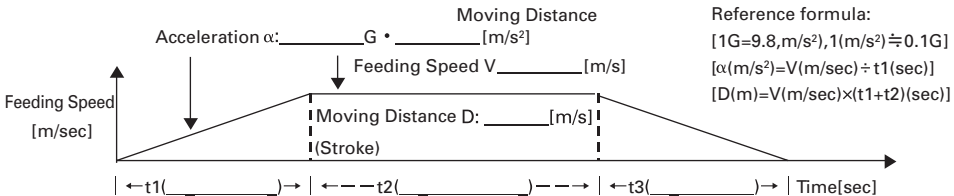
Fax: _____

Fax: +81 3 3917 0643

1) Application: _____

2) Name of Machinery: _____

3) Number of Units: _____

| Item | Contents | | | | | | | | | | | | | | | | | | | | | | | | | | | | | | | | | | | | | | | | | | | | | | | | | | | | | | | | | | | | | | | | | | | | | | | | | | | | | | | | | | | | | | | | | | | | | | | | |
|---|---|--|--|--------------------------------|-----|--------------------------------|----|----------------|----|----------------------|----|--------------------------|----|--|---|-------------------------|---|------------------------|---|--------------------------------|----|-----------------------------------|----|--|--|------------------------------|----|---------------------------------|----|---------------------|--|----------------------------|-------------------|-----------------------|-------------------|--|--|------------------|-------------------|--|-------------------|--|--|--------------------------|----|------------------------------|----|----------------------|----|-----------------------------|----|--------------------------|----|-----------------------|----|---------------------|----|-----------------------------|----|---------------------------|----|---------------------------|----|-------------------------|----|--|--|---|--|--|--------------------|--|--|---|--|--|--|--------------------|--|--|--|--|--|--|--|---------------------------|--|--|--|-------------------|--|---|--|-----|--|--|-----|
| ① | Name of target equipment Equipment name, category (transport, processing, test, other) | | | | | | | | | | | | | | | | | | | | | | | | | | | | | | | | | | | | | | | | | | | | | | | | | | | | | | | | | | | | | | | | | | | | | | | | | | | | | | | | | | | | | | | | | | | | | | | | |
| ② | Name of servo axis Axis name, axial mechanism (horizontal/vertical), brake mechanism (yes/no) | | | | | | | | | | | | | | | | | | | | | | | | | | | | | | | | | | | | | | | | | | | | | | | | | | | | | | | | | | | | | | | | | | | | | | | | | | | | | | | | | | | | | | | | | | | | | | | | |
| ③ | Current condition of above axis Manufacturer Name () Series Name () Motor Capacity () Hydraulic, Mechanical, or New System () | | | | | | | | | | | | | | | | | | | | | | | | | | | | | | | | | | | | | | | | | | | | | | | | | | | | | | | | | | | | | | | | | | | | | | | | | | | | | | | | | | | | | | | | | | | | | | | | |
| ④ | Positioning accuracy ± mm / ± μm | | | | | | | | | | | | | | | | | | | | | | | | | | | | | | | | | | | | | | | | | | | | | | | | | | | | | | | | | | | | | | | | | | | | | | | | | | | | | | | | | | | | | | | | | | | | | | | | |
| ⑤ | Operation pattern  <p>Reference formula: $[1G=9.8, m/s^2], 1(m/s^2) \approx 0.1G]$ $[\alpha(m/s^2)=V(m/sec) \div t1(sec)]$ $[D(m)=V(m/sec) \times (t1+t2)(sec)]$</p> | | | | | | | | | | | | | | | | | | | | | | | | | | | | | | | | | | | | | | | | | | | | | | | | | | | | | | | | | | | | | | | | | | | | | | | | | | | | | | | | | | | | | | | | | | | | | | | | |
| ⑥ | Mechanism Ball-screw/screw-rotation type (horizontal), ball-screw/nut-rotation type (horizontal), rack and pinion (horizontal), belt/chain (horizontal), rotary table, roll feed, instability | | | | | | | | | | | | | | | | | | | | | | | | | | | | | | | | | | | | | | | | | | | | | | | | | | | | | | | | | | | | | | | | | | | | | | | | | | | | | | | | | | | | | | | | | | | | | | | | |
| ⑦ | Mechanical structure <table border="0"> <tr> <td>WT (table mass)</td> <td>kg</td> <td>WL (work mass)</td> <td>kg</td> <td>WA (mass of other drive parts)</td> <td>kg</td> </tr> <tr> <td>WR (rack mass)</td> <td>kg</td> <td>WB (belt/chain mass)</td> <td>kg</td> <td>WC (counterbalance mass)</td> <td>kg</td> </tr> <tr> <td>Fa (external force in axial direction)</td> <td>N</td> <td>Fb (ball-screw preload)</td> <td>N</td> <td>T (roll pushing force)</td> <td>N</td> </tr> <tr> <td>Dr1 (drive-side roll diameter)</td> <td>mm</td> <td>Dr2 (follower-side roll diameter)</td> <td>mm</td> <td></td> <td></td> </tr> <tr> <td>Lr1 (drive-side roll length)</td> <td>mm</td> <td>Lr2 (follower-side roll length)</td> <td>mm</td> <td>G (reduction ratio)</td> <td></td> </tr> <tr> <td>JG (speed-reducer inertia)</td> <td>kg·m²</td> <td>JC (coupling inertia)</td> <td>kg·m²</td> <td></td> <td></td> </tr> <tr> <td>JN (nut inertia)</td> <td>kg·m²</td> <td>JO (other motor-axis conversion inertia)</td> <td>kg·m²</td> <td></td> <td></td> </tr> <tr> <td>Db (ball-screw diameter)</td> <td>mm</td> <td>Lb (ball-screw axial length)</td> <td>mm</td> <td>Pb (ball-screw lead)</td> <td>mm</td> </tr> <tr> <td>Dp (pinion/pulley diameter)</td> <td>mm</td> <td>Lp (pinion axial length)</td> <td>mm</td> <td>Tp (pulley thickness)</td> <td>mm</td> </tr> <tr> <td>Dt (table diameter)</td> <td>mm</td> <td>Dh (table-support diameter)</td> <td>mm</td> <td>LW (load shift from axis)</td> <td>mm</td> </tr> <tr> <td>Ds (table shaft diameter)</td> <td>mm</td> <td>Ls (table shaft length)</td> <td>mm</td> <td></td> <td></td> </tr> <tr> <td>ρ (specific gravity of ball-screw/pinion/pulley/table-shaft material)</td> <td></td> <td></td> <td>kg/cm³</td> <td></td> <td></td> </tr> <tr> <td>μ (friction coefficient between sheet and sliding-surface/support-section/roll)</td> <td></td> <td>ρ1 (specific gravity of roll-1 material)</td> <td></td> <td>kg/cm³</td> <td></td> </tr> <tr> <td>ρ2 (specific gravity of roll-2 material)</td> <td></td> <td>κ (internal friction coefficient of preload nut)</td> <td></td> <td></td> <td></td> </tr> <tr> <td>η (mechanical efficiency)</td> <td></td> <td>JL (load inertia of motor-axis conversion)</td> <td></td> <td>kg·m²</td> <td></td> </tr> <tr> <td>TF (friction torque of motor axis conversion)</td> <td></td> <td>N·m</td> <td>TU (imbalance torque of motor axis conversion)</td> <td></td> <td>N·m</td> </tr> </table> | WT (table mass) | kg | WL (work mass) | kg | WA (mass of other drive parts) | kg | WR (rack mass) | kg | WB (belt/chain mass) | kg | WC (counterbalance mass) | kg | Fa (external force in axial direction) | N | Fb (ball-screw preload) | N | T (roll pushing force) | N | Dr1 (drive-side roll diameter) | mm | Dr2 (follower-side roll diameter) | mm | | | Lr1 (drive-side roll length) | mm | Lr2 (follower-side roll length) | mm | G (reduction ratio) | | JG (speed-reducer inertia) | kg·m ² | JC (coupling inertia) | kg·m ² | | | JN (nut inertia) | kg·m ² | JO (other motor-axis conversion inertia) | kg·m ² | | | Db (ball-screw diameter) | mm | Lb (ball-screw axial length) | mm | Pb (ball-screw lead) | mm | Dp (pinion/pulley diameter) | mm | Lp (pinion axial length) | mm | Tp (pulley thickness) | mm | Dt (table diameter) | mm | Dh (table-support diameter) | mm | LW (load shift from axis) | mm | Ds (table shaft diameter) | mm | Ls (table shaft length) | mm | | | ρ (specific gravity of ball-screw/pinion/pulley/table-shaft material) | | | kg/cm ³ | | | μ (friction coefficient between sheet and sliding-surface/support-section/roll) | | ρ1 (specific gravity of roll-1 material) | | kg/cm ³ | | ρ2 (specific gravity of roll-2 material) | | κ (internal friction coefficient of preload nut) | | | | η (mechanical efficiency) | | JL (load inertia of motor-axis conversion) | | kg·m ² | | TF (friction torque of motor axis conversion) | | N·m | TU (imbalance torque of motor axis conversion) | | N·m |
| WT (table mass) | kg | WL (work mass) | kg | WA (mass of other drive parts) | kg | | | | | | | | | | | | | | | | | | | | | | | | | | | | | | | | | | | | | | | | | | | | | | | | | | | | | | | | | | | | | | | | | | | | | | | | | | | | | | | | | | | | | | | | | | | | |
| WR (rack mass) | kg | WB (belt/chain mass) | kg | WC (counterbalance mass) | kg | | | | | | | | | | | | | | | | | | | | | | | | | | | | | | | | | | | | | | | | | | | | | | | | | | | | | | | | | | | | | | | | | | | | | | | | | | | | | | | | | | | | | | | | | | | | |
| Fa (external force in axial direction) | N | Fb (ball-screw preload) | N | T (roll pushing force) | N | | | | | | | | | | | | | | | | | | | | | | | | | | | | | | | | | | | | | | | | | | | | | | | | | | | | | | | | | | | | | | | | | | | | | | | | | | | | | | | | | | | | | | | | | | | | |
| Dr1 (drive-side roll diameter) | mm | Dr2 (follower-side roll diameter) | mm | | | | | | | | | | | | | | | | | | | | | | | | | | | | | | | | | | | | | | | | | | | | | | | | | | | | | | | | | | | | | | | | | | | | | | | | | | | | | | | | | | | | | | | | | | | | | | |
| Lr1 (drive-side roll length) | mm | Lr2 (follower-side roll length) | mm | G (reduction ratio) | | | | | | | | | | | | | | | | | | | | | | | | | | | | | | | | | | | | | | | | | | | | | | | | | | | | | | | | | | | | | | | | | | | | | | | | | | | | | | | | | | | | | | | | | | | | | |
| JG (speed-reducer inertia) | kg·m ² | JC (coupling inertia) | kg·m ² | | | | | | | | | | | | | | | | | | | | | | | | | | | | | | | | | | | | | | | | | | | | | | | | | | | | | | | | | | | | | | | | | | | | | | | | | | | | | | | | | | | | | | | | | | | | | | |
| JN (nut inertia) | kg·m ² | JO (other motor-axis conversion inertia) | kg·m ² | | | | | | | | | | | | | | | | | | | | | | | | | | | | | | | | | | | | | | | | | | | | | | | | | | | | | | | | | | | | | | | | | | | | | | | | | | | | | | | | | | | | | | | | | | | | | | |
| Db (ball-screw diameter) | mm | Lb (ball-screw axial length) | mm | Pb (ball-screw lead) | mm | | | | | | | | | | | | | | | | | | | | | | | | | | | | | | | | | | | | | | | | | | | | | | | | | | | | | | | | | | | | | | | | | | | | | | | | | | | | | | | | | | | | | | | | | | | | |
| Dp (pinion/pulley diameter) | mm | Lp (pinion axial length) | mm | Tp (pulley thickness) | mm | | | | | | | | | | | | | | | | | | | | | | | | | | | | | | | | | | | | | | | | | | | | | | | | | | | | | | | | | | | | | | | | | | | | | | | | | | | | | | | | | | | | | | | | | | | | |
| Dt (table diameter) | mm | Dh (table-support diameter) | mm | LW (load shift from axis) | mm | | | | | | | | | | | | | | | | | | | | | | | | | | | | | | | | | | | | | | | | | | | | | | | | | | | | | | | | | | | | | | | | | | | | | | | | | | | | | | | | | | | | | | | | | | | | |
| Ds (table shaft diameter) | mm | Ls (table shaft length) | mm | | | | | | | | | | | | | | | | | | | | | | | | | | | | | | | | | | | | | | | | | | | | | | | | | | | | | | | | | | | | | | | | | | | | | | | | | | | | | | | | | | | | | | | | | | | | | | |
| ρ (specific gravity of ball-screw/pinion/pulley/table-shaft material) | | | kg/cm ³ | | | | | | | | | | | | | | | | | | | | | | | | | | | | | | | | | | | | | | | | | | | | | | | | | | | | | | | | | | | | | | | | | | | | | | | | | | | | | | | | | | | | | | | | | | | | | | |
| μ (friction coefficient between sheet and sliding-surface/support-section/roll) | | ρ1 (specific gravity of roll-1 material) | | kg/cm ³ | | | | | | | | | | | | | | | | | | | | | | | | | | | | | | | | | | | | | | | | | | | | | | | | | | | | | | | | | | | | | | | | | | | | | | | | | | | | | | | | | | | | | | | | | | | | | |
| ρ2 (specific gravity of roll-2 material) | | κ (internal friction coefficient of preload nut) | | | | | | | | | | | | | | | | | | | | | | | | | | | | | | | | | | | | | | | | | | | | | | | | | | | | | | | | | | | | | | | | | | | | | | | | | | | | | | | | | | | | | | | | | | | | | | | |
| η (mechanical efficiency) | | JL (load inertia of motor-axis conversion) | | kg·m ² | | | | | | | | | | | | | | | | | | | | | | | | | | | | | | | | | | | | | | | | | | | | | | | | | | | | | | | | | | | | | | | | | | | | | | | | | | | | | | | | | | | | | | | | | | | | | |
| TF (friction torque of motor axis conversion) | | N·m | TU (imbalance torque of motor axis conversion) | | N·m | | | | | | | | | | | | | | | | | | | | | | | | | | | | | | | | | | | | | | | | | | | | | | | | | | | | | | | | | | | | | | | | | | | | | | | | | | | | | | | | | | | | | | | | | | | | |
| ⑧ | Speed reducer Customer-provided (/); Sanyo standard (planet/spur/no-backlash-planet:: /); other (/) | | | | | | | | | | | | | | | | | | | | | | | | | | | | | | | | | | | | | | | | | | | | | | | | | | | | | | | | | | | | | | | | | | | | | | | | | | | | | | | | | | | | | | | | | | | | | | | | |
| ⑨ | Sensor type Sensor type specified (yes / no) Yes: (incremental , optical absolute , optical absolute [resolver absolute with incremental function]) Resolution () | | | | | | | | | | | | | | | | | | | | | | | | | | | | | | | | | | | | | | | | | | | | | | | | | | | | | | | | | | | | | | | | | | | | | | | | | | | | | | | | | | | | | | | | | | | | | | | | |
| ⑩ | Input format Position , speed, torque, communications (SERCOS / CAN / DeviceNet) other () | | | | | | | | | | | | | | | | | | | | | | | | | | | | | | | | | | | | | | | | | | | | | | | | | | | | | | | | | | | | | | | | | | | | | | | | | | | | | | | | | | | | | | | | | | | | | | | | |
| ⑪ | Upper-level equipment (controller) Sequencer , laptop , customer-developed product , Sanyo-provided , other () | | | | | | | | | | | | | | | | | | | | | | | | | | | | | | | | | | | | | | | | | | | | | | | | | | | | | | | | | | | | | | | | | | | | | | | | | | | | | | | | | | | | | | | | | | | | | | | | |
| ⑫ | Usage environment and other requirements Cutting , clean-room use , anti-dust measures , other () | | | | | | | | | | | | | | | | | | | | | | | | | | | | | | | | | | | | | | | | | | | | | | | | | | | | | | | | | | | | | | | | | | | | | | | | | | | | | | | | | | | | | | | | | | | | | | | | |
| ⑬ | Estimated production Single product: () units/month () units/year | | | | | | | | | | | | | | | | | | | | | | | | | | | | | | | | | | | | | | | | | | | | | | | | | | | | | | | | | | | | | | | | | | | | | | | | | | | | | | | | | | | | | | | | | | | | | | | | |
| ⑭ | Development schedule Prototype period: ()Year ()Month Production period: ()Year ()Month | | | | | | | | | | | | | | | | | | | | | | | | | | | | | | | | | | | | | | | | | | | | | | | | | | | | | | | | | | | | | | | | | | | | | | | | | | | | | | | | | | | | | | | | | | | | | | | | |
| ⑮ | Various measures Related documentation (already submitted ; send later by mail) Visit/PR desired (yes / no) Meeting desired (yes / no) | | | | | | | | | | | | | | | | | | | | | | | | | | | | | | | | | | | | | | | | | | | | | | | | | | | | | | | | | | | | | | | | | | | | | | | | | | | | | | | | | | | | | | | | | | | | | | | | |
| ⑯ | Miscellaneous (questions, pending problems, unresolved issues, etc.) | | | | | | | | | | | | | | | | | | | | | | | | | | | | | | | | | | | | | | | | | | | | | | | | | | | | | | | | | | | | | | | | | | | | | | | | | | | | | | | | | | | | | | | | | | | | | | | | |

■ Precautions For Adoption



Failure to follow the precautions on the right may cause moderate injury and property damage, or in some circumstances, could lead to a serious accident. Always follow all listed precautions.

Cautions

- Read the accompanying Instruction Manual carefully prior to using the product.
- If applying to medical devices and other equipment affecting people's lives, please contact us beforehand and take appropriate safety measures.
- If applying to equipment that can have significant effects on society and the general public, please contact us beforehand.
- Do not use this product in an environment where vibration is present, such as in a moving vehicle or shipping vessel.
- Do not perform any retrofitting, re-engineering, or modification to this equipment.
- The drivers presented in this catalog are meant to be used for general industrial applications. If using for special applications related to aviation and space, nuclear power, electric power, submarine repeaters, etc., please contact us beforehand.

* For any question or inquiry regarding the above, contact our Sales Department.

SANYO DENKI CO., LTD.

1-15-1, Kita-Otsuka, Toshima-ku, Tokyo 170-8451, Japan

<http://www.sanyodenki.com>

Phone: +81 3 3917 5157

SANYO DENKI AMERICA, INC.

468 Amapola Avenue Torrance, CA 90501 U.S.A.

Phone: +1 310 783 5400

SANYO DENKI EUROPE SA.

P.A. Paris Nord II 48 Allée des Erables-VILLEPINTE BP.57286 F-95958 ROISSY CDG Cedex France

Phone: +33 1 48 63 26 61

SANYO DENKI GERMANY GmbH

Frankfurter Strasse 63-69 65760 Eschborn Germany

Phone: +49 6196 76113 0

SANYO DENKI KOREA CO., LTD.

9F 5-2, Sunwha-dong Jung-gu Seoul, 100-130, Korea

Phone: +82 2 773 5623

SANYO DENKI SHANGHAI CO., LTD.

Room 2116, Bldg B, FAR EAST INTERNATIONAL PLAZA, No.317 XianXia Rd., Shanghai 200051 China

Phone: +86 21 6235 1107

SANYO DENKI TAIWAN CO., LTD.

Room 1208, 12F, No.96 Chung Shan N, Rd., Sec.2, Taipei 104, Taiwan, R.O.C.

Phone: +886 2 2511 3938

SANYO DENKI (H.K.) CO., LIMITED

Room 2305, 23/F, South Tower, Concordia Plaza, 1 Science Museum Rd., TST East, Kowloon, Hong Kong

Phone: +852 2312 6250

SANYO DENKI SINGAPORE PTE. LTD.

10 Hoe Chiang Road #14-03A/04 Keppel Towers Singapore 089315

Phone: +65 6223 1071